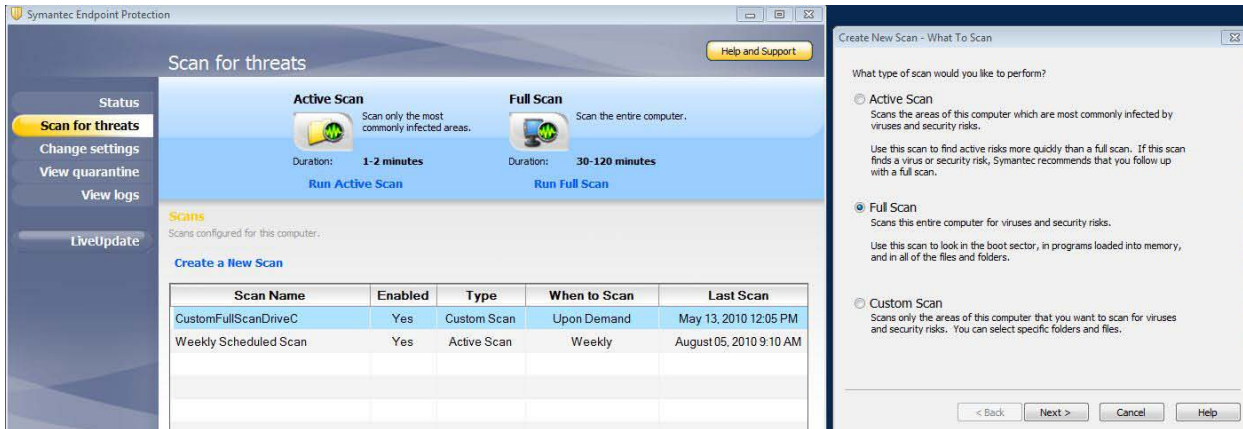
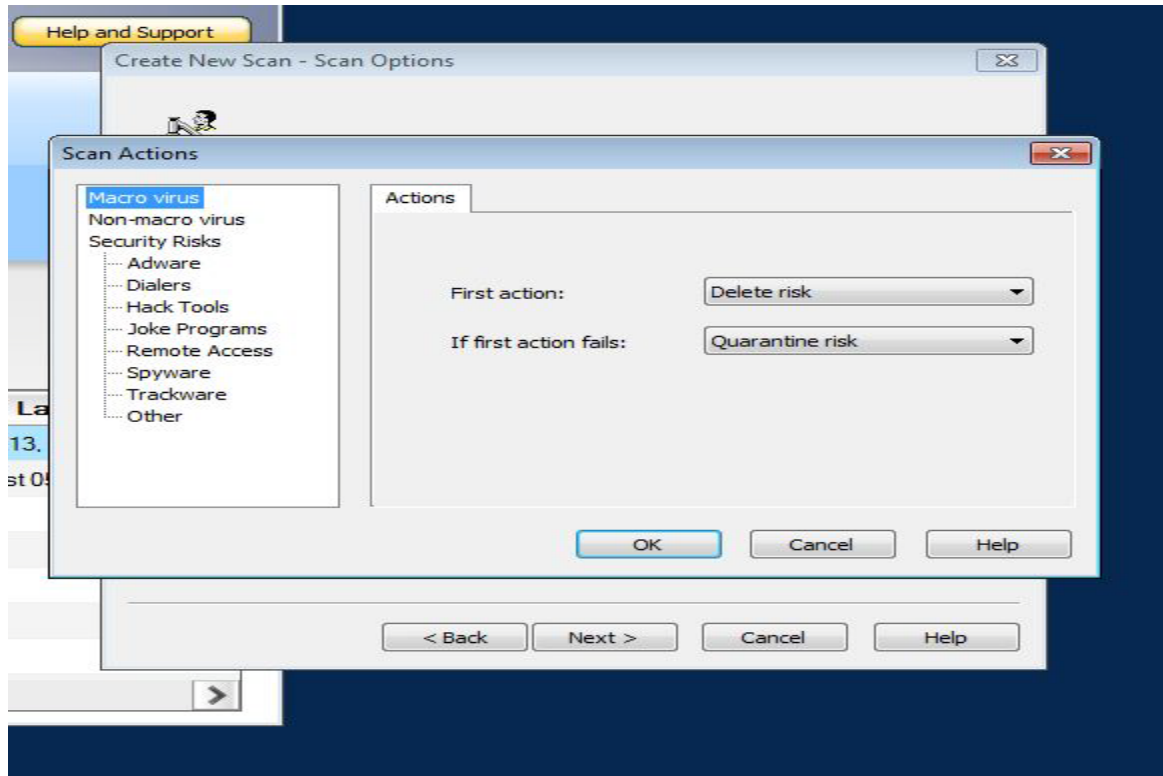


How To Configure SEP – Custom Full Scan On Demand

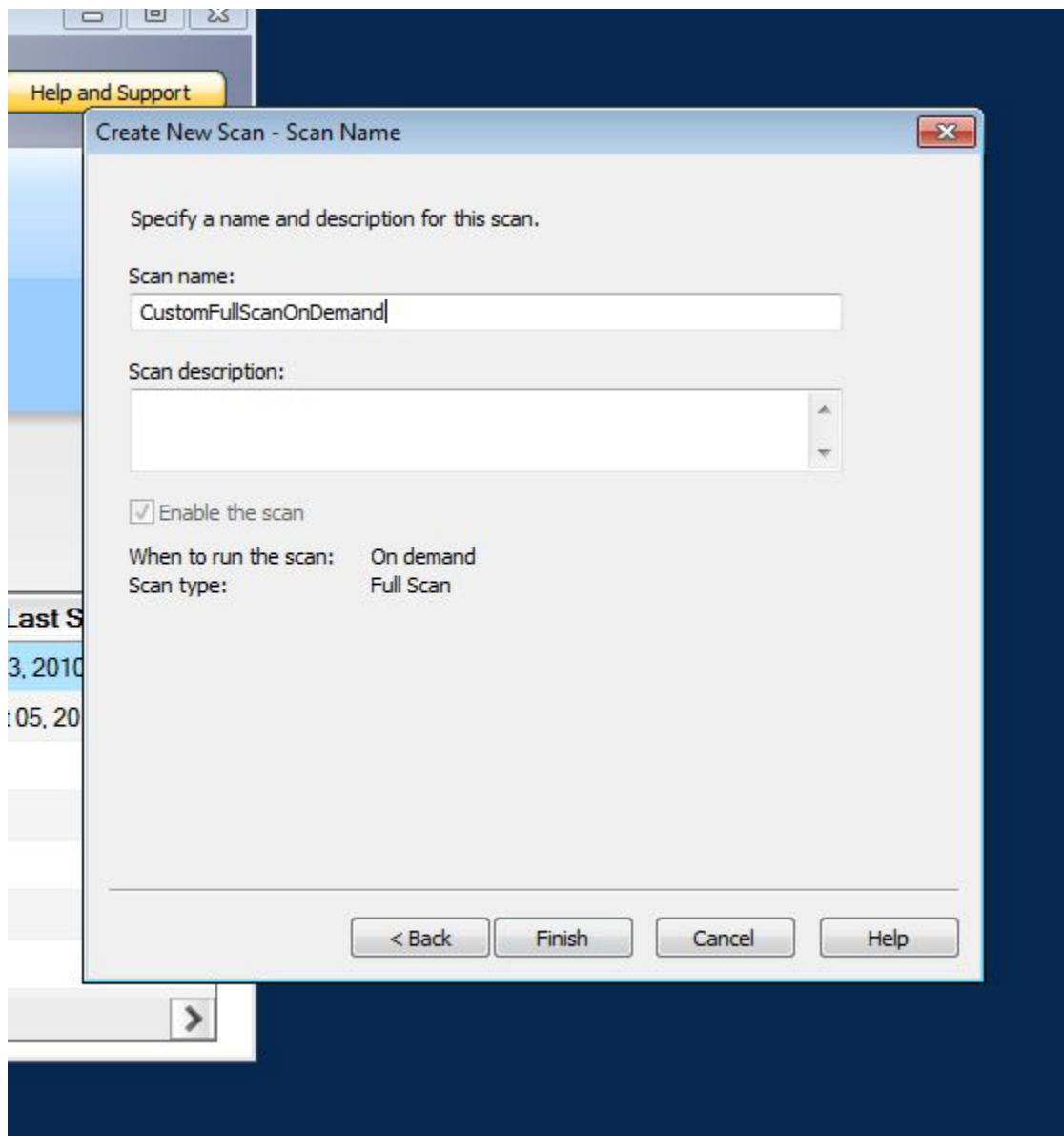
1. Open SEP from shield in task tray (by clock)
2. Click on Scan for threats
3. Click on Create a New Scan
4. Select Full Scan
5. Click Next



6. Click on Actions:
Configure Macro virus, Non-macro virus, Security Risks actions:
 - a. Select each category on the left
 - b. Change First action to Delete risk
 - c. Change next action to Quarantine risk
 - d. Click OK



7. Click Next
8. Select On demand
9. Click Next
10. Name your custom full scan and enter an optional description
11. Click Finish



12. RUN SCAN by right-clicking on the name and selecting Scan Now