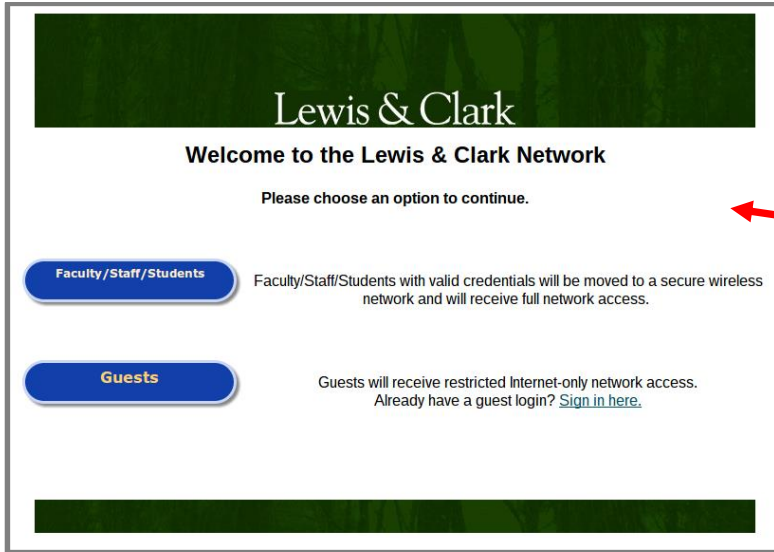
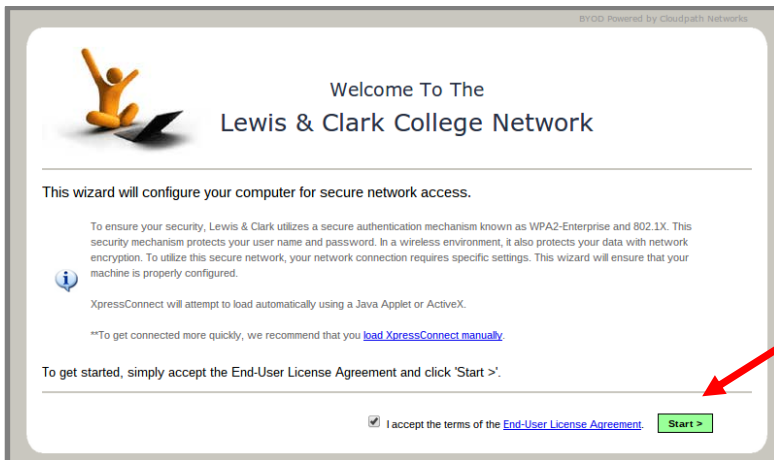


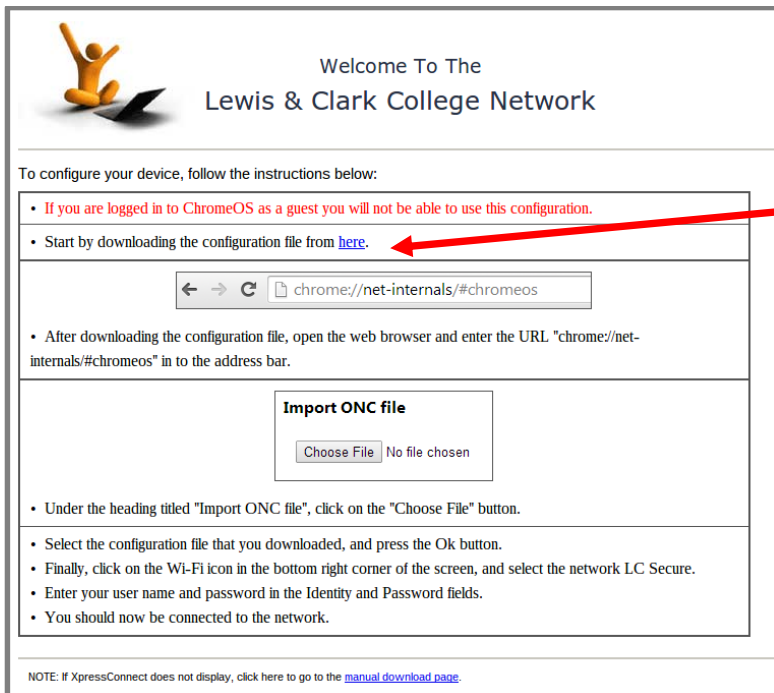
Connect to Wireless Network on ChromeOS



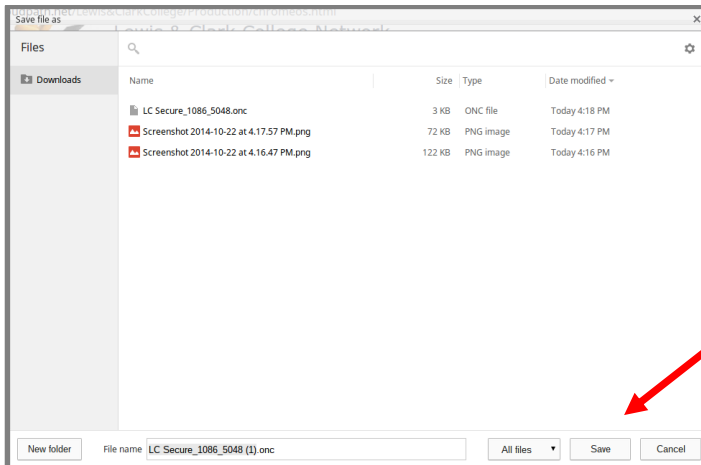
1. Connect to LC Wireless.
2. Open Google Chrome and navigate to a website, such as www.cnn.com. **THIS** webpage should load. If it does not, attempt to navigate to other pages until it does.
3. Click on "Faculty/Staff/Students".



4. Select "I accept the terms of the End-User License Agreement" and click "Start".

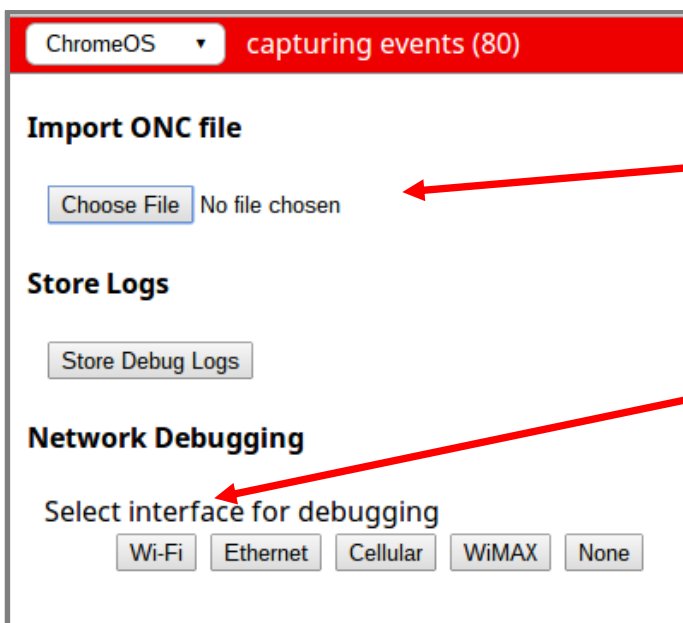


5. Right-click on "here".
6. Select "save link as..."



7. Select "Save".

8. In Google Chrome, enter "chrome://net-internals/#chromeos" into the address bar.

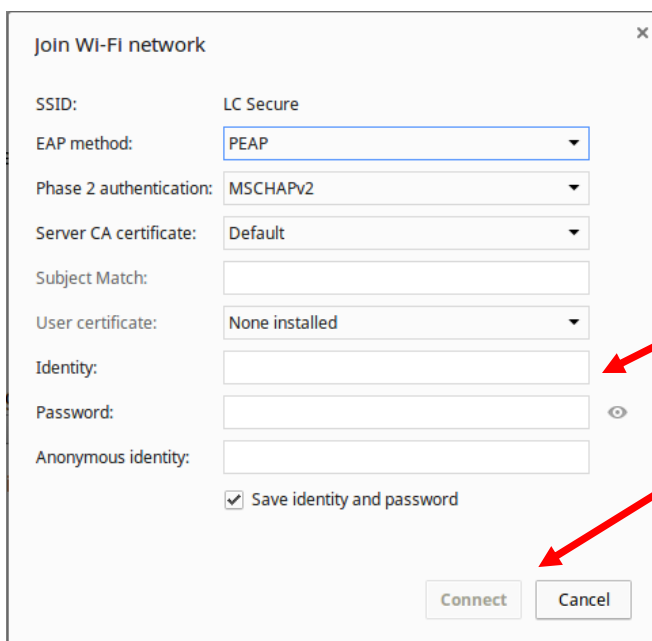


9. Select "Choose File".

10. Select the .onc file that you just downloaded, and click "open".

11. Under "Network Debugging", select "Wi-Fi".

12. Connect to the "LC Secure" network.



13. Enter your LC username and password.

14. Click Connect.