

Standing Work Station

Sit To Stand (Base Only)

★★★ \$500-700

In stock locally

5 Year Warranty



Features

- Base only
- base only fits 48" to 72" tops
- 24" - 52" height range
- In stock locally

Can be seen on Campus at:

Standing Work Station

Sit To Stand (Base & Top)

★★★ \$500-700

In stock locally
5 Year Warranty



Features

- Base & top
- 24" - 52" height range
- In stock locally

Options

- Natural Cherry or Maple top finish
- 24" x 48" or 24" x 60" top

Can be seen on Campus at:

Standing Work Station

Steelcase Airtouch System

★★★★★ \$1100-1300
Limited Lifetime Warranty



Features

- 36" x 24" top
- Height range: 26" - 43"
- 150 lb load capacity
- Laminate top
- Non-electric for open spaces

Options

- Multitude of finish options
- Multitude of shapes

Can be seen on Campus at:

Standing Work Station

Steelcase Series 7

★★★★★ \$1100-1300

4 week lead time

Limited Lifetime Warranty



Features

- 36" x 24" top
- Height range: 24"-52"
- 295 lb load capacity

Options

- Multitude of finish options
- Multitude of shapes

Can be seen on Campus at:

Work Station - Herman Miller, Canvas Office Landscapes

Economy Office Layout #1

★★★ \$1000-2000

3-5 week lead time

12 Year Warranty



Features

- 30" x 72" main desk
- 24" x 48" return
- File storage pedestal
- Laminate work surface
- Fixed height post legs



Can be seen on Campus at:

Work Station - Knoll

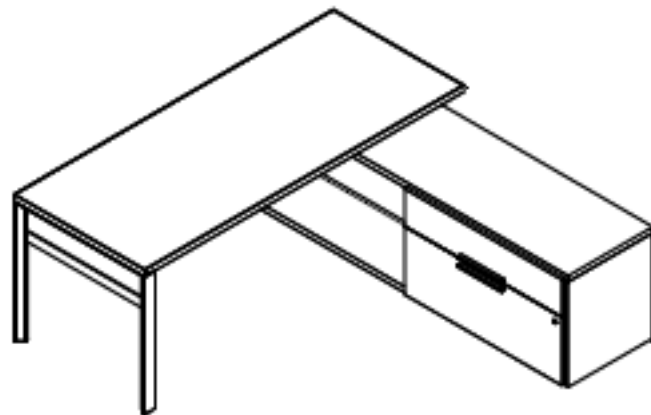
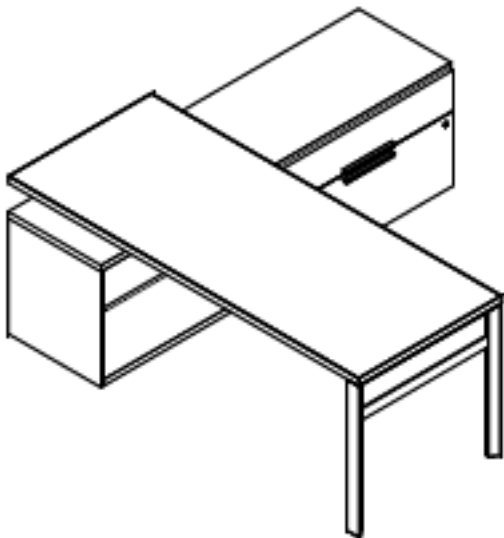
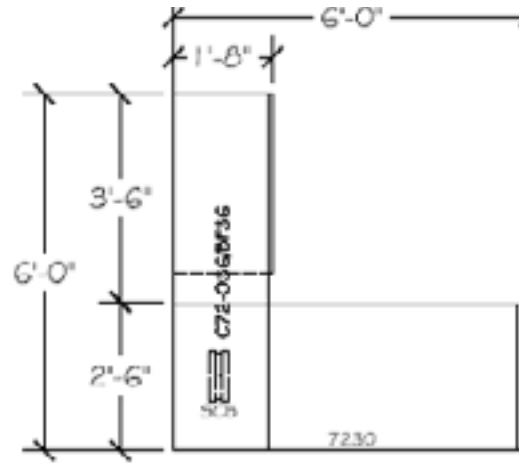
LC# WW1-602

Dividends Horizon Layout #1

★★★ \$1000-2000

4 weeks + shipping lead time

Limited Lifetime Warranty



Features

- Laminate
- 72" wide x 30" deep desk
- 72" wide x 20" deep x 22" high credenza
- 36" wide open bookcase storage
- 36" wide box/file storage

Options

- Desk surface and credenza also available in wood veneer

Can be seen on Campus at:

Work Station - Herman Miller, Canvas Office Landscapes

Economy Office Layout #2

★★★ \$1000-2000

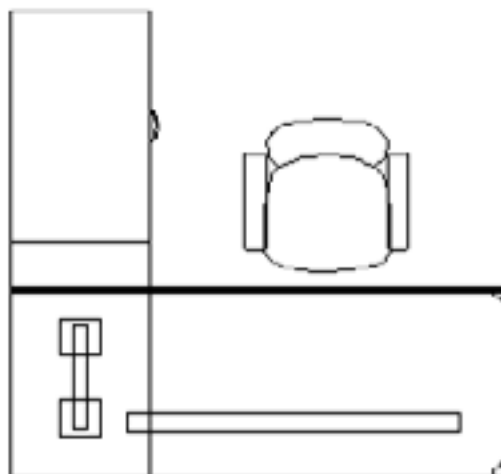
3-5 week lead time

12 Year Warranty



Features

- 30" x 72" main desk
- 20" x 72" return credenza
- Laminate work surface
- Fixed height post legs



Can be seen on Campus at:

Work Station - Herman Miller, Canvas Office Landscapes

Private Office Layout #1

★★★ \$1000-2000

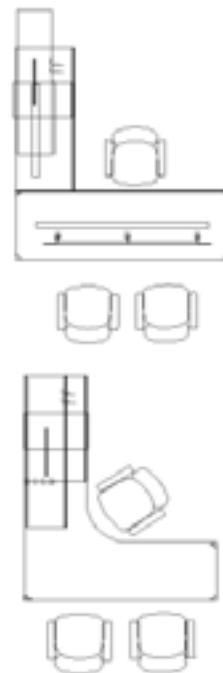
3-5 week lead time

12 Year Warranty



Features

- 30" x 84" main desk
- 24" x 60" return desk
- Laminate surfaces
- Fixed height post legs
- Upper storage cabinet with sliding doors
- Lower storage file/box pedestals



Can be seen on Campus at:

Work Station - Currency

LC# WW1-605

Steelcase Currency Layout #2

★★★ \$1000-2000

15 day lead time

Limited Lifetime Warranty



Features

- Contemporary laminate
- Solid construction
- Fully assembled
- Limited lifetime warranty
- 30 x 72 desk
- 24 x 42 return
- 72 wall mount/tackboard
- Box/File pedestal

Options

- Many finish options

Can be seen on Campus at:

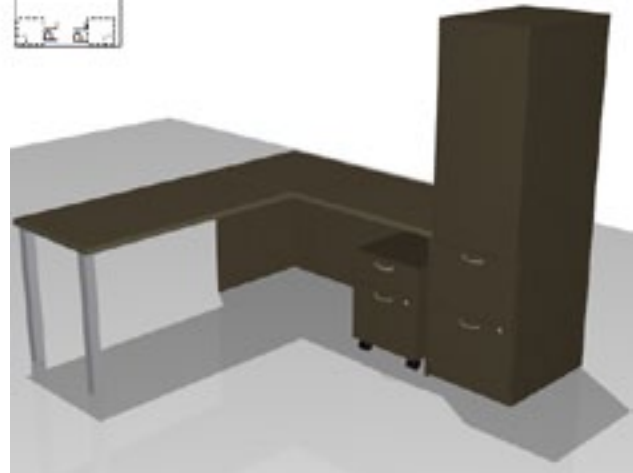
Work Station - Currency

Steelcase Currency Layout #3

★★★ \$1000-2000

15 day lead time

Limited Lifetime Warranty



Features

- Contemporary laminate
- Solid construction
- Fully assembled
- 24 x 48 open front desk
- 24 x 60 return
- Mobile box/file
- File/Bookcase combo
- Limited lifetime warranty

Options

- Many finish options

Can be seen on Campus at:

Work Station - Currency

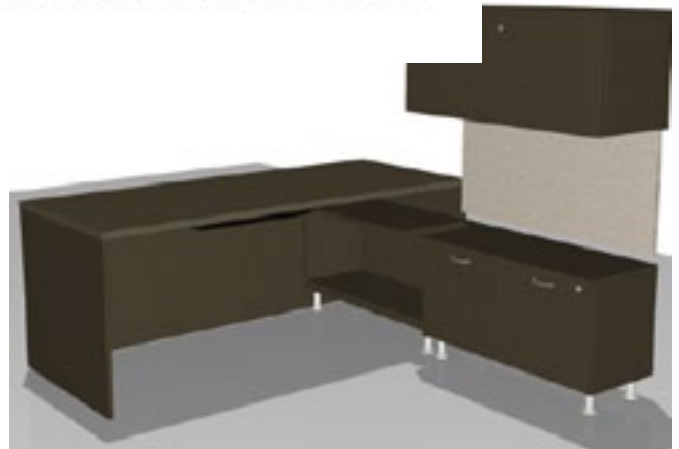
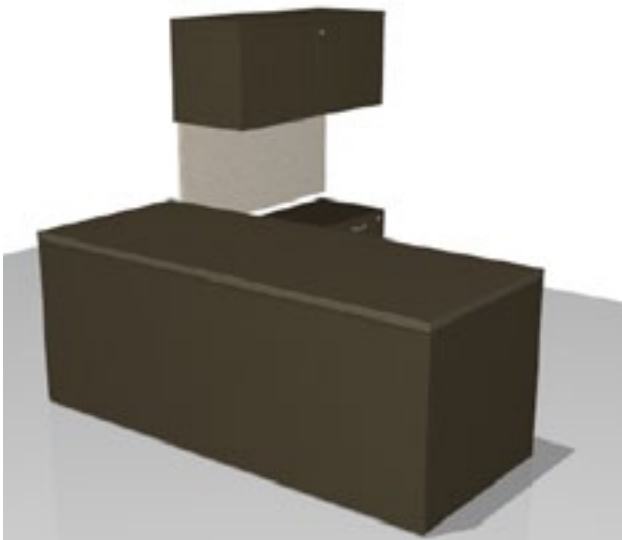
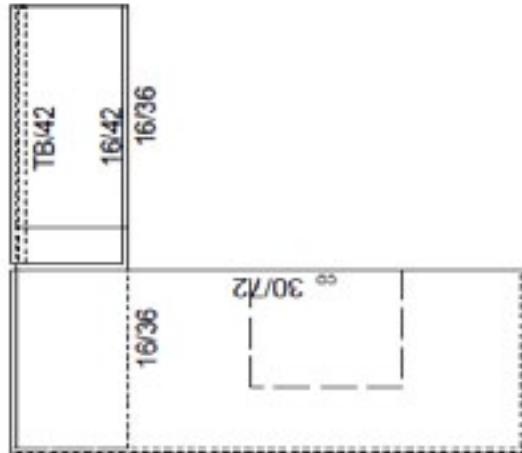
LC# WW1-607

Steelcase Currency Layout #4

★★★ \$1000-2000

15 day lead time

Limited Lifetime Warranty



Features

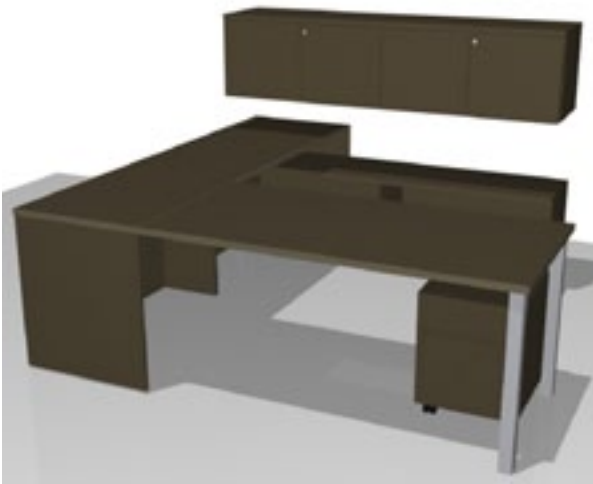
- Contemporary laminate
- Solid construction
- Fully assembled
- Limited lifetime warranty
- 30 x 72 desk with center drawer
- 16 x 42 return combo
- Storage cabinet
- Wall mounted cabinet
- Tackboard

Options

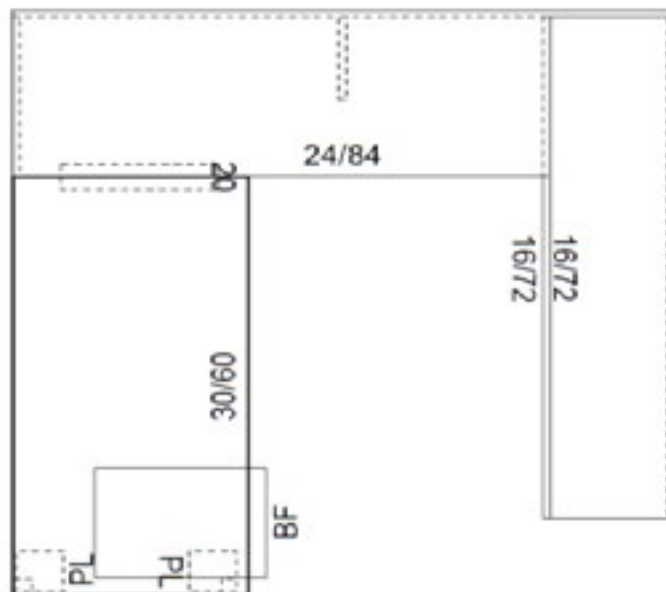
- Many finish options

Can be seen on Campus at:

★★★★ \$2000-3500
15 day lead time
Limited Lifetime Warranty



- Contemporary laminate
- Solid construction
- Fully assembled
- Many finish options
- 30 x 60 desk
- 24 x 84 return
- 16 x 17 credenza
- 16 x 72 wall mounted cabinet
- Mobile box/file storage
- Limited lifetime warranty



Can be seen on Campus at:

Work Station - Herman Miller, Canvas Office Landscapes

Private Office Layout #2

★★★★★ \$2000-3500

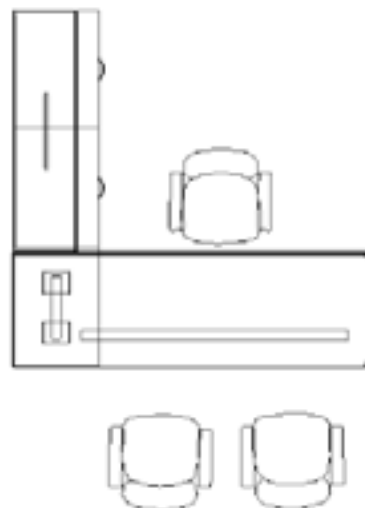
5 week lead time

12 Year Warranty



Features

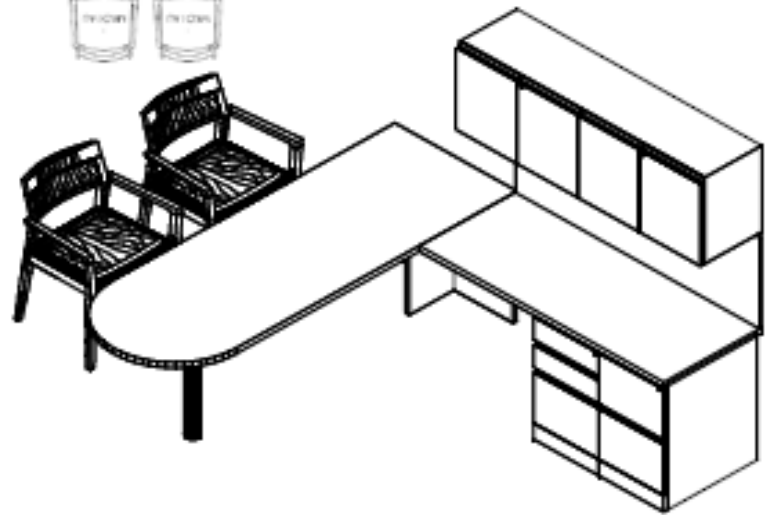
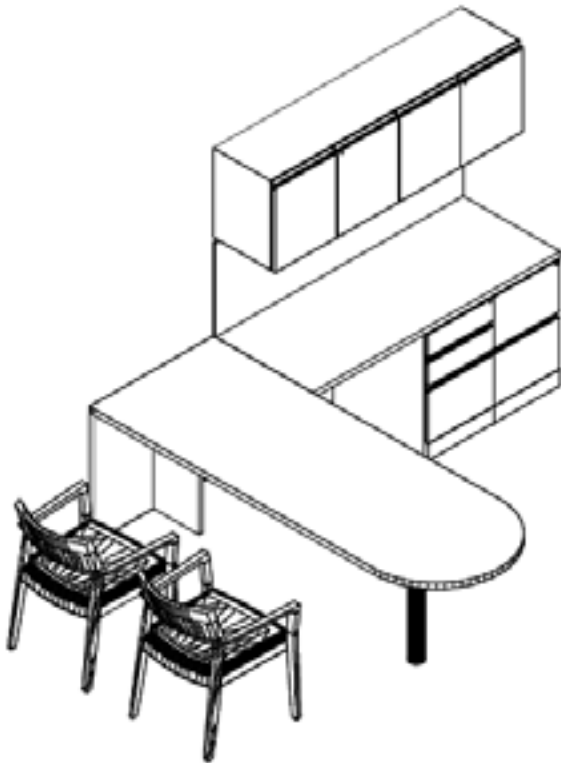
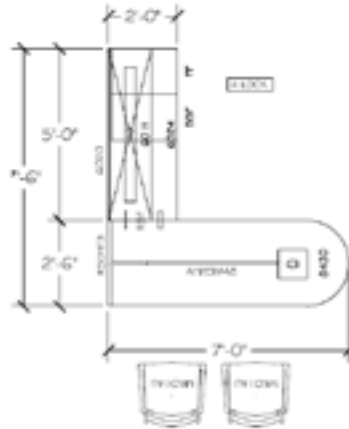
- 30" x 84" main desk
- 20" x 60" return credenza
- 20" x 30" open credenza under desk
- Laminate surfaces
- Fixed height post legs
- Upper storage cabinet, open



Can be seen on Campus at:

Can be seen on Campus at:

★★★★★ \$2000-3500
5 weeks + shipping lead time
Limited Lifetime Warranty



- 84" wide x 30" deep buller top with partial height modesty panel
- 60" wide x 24" deep return surfaces
- 60" side overhead with hinged doors, exposed cubby, and task light
- box/file and file pedestal
- 60" wide tack board

- Laminate or veneer

Can be seen on Campus at:

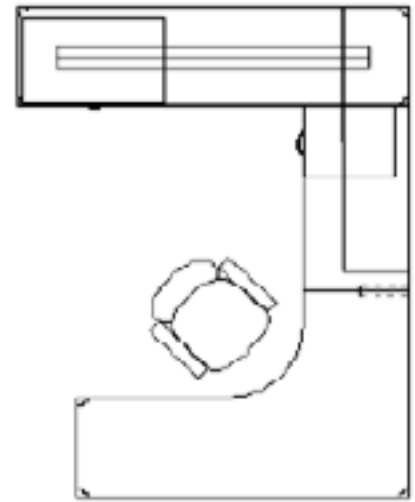
Work Station - Herman Miller, Canvas Office Landscapes

Executive Office Layout #1

★★★★★ \$2000-3500

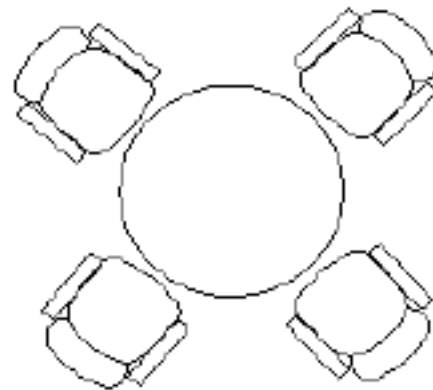
5 week lead time

12 Year Warranty



Features

- 24" x 48" x 72" main corner desk
- 24" x 42" return
- 42" x 84" back desk
- Upper storage with sliding door
- Lower lateral file
- All laminate work surfaces and storage
- Fixed height post legs
- 42" diameter round table



Can be seen on Campus at:

Work Station - Herman Miller

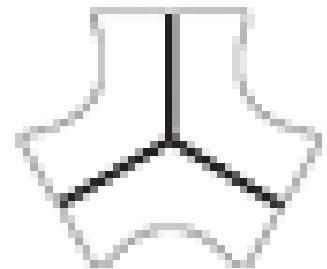
LC# WW2-613

Sense Desking (3 Pack)

★★★★★ \$2000-3500

5 week lead time

12 Year Warranty



Features

- Set of 3
- 24" x 54" main desks (120 degree)
- Laminate surfaces
- Privacy panel with toolbar attached
- Fixed height angled legs (metallic silver)

Options

- Available with straight or adjustable legs

Can be seen on Campus at:

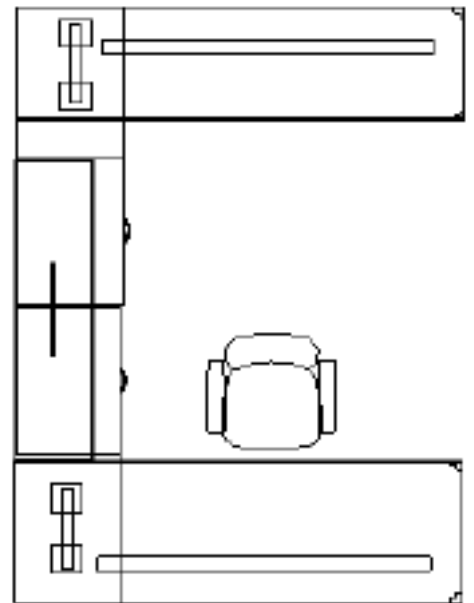
Work Station - Herman Miller, Canvas Office Landscapes

Executive Office Layout #2

★★★★★ \$2000-3500

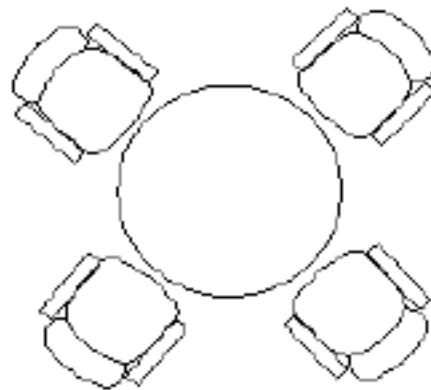
5 week lead time

12 Year Warranty



Features

- 30" x 84" main desk
- 24" x 84" back desk
- 20" x 60" lower credenzas (2)
- Upper storage- open
- All laminate surfaces & storage
- Fixed height post legs
- 42" diameter round table



Can be seen on Campus at:

Work Station - Knoll

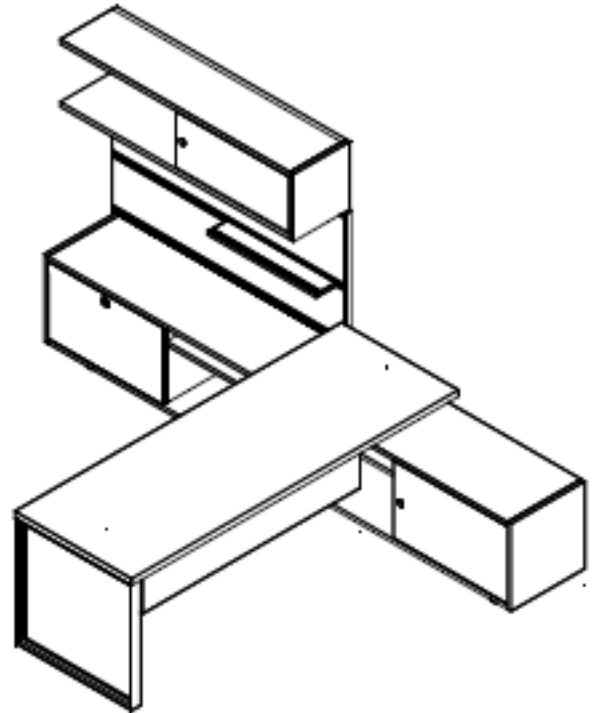
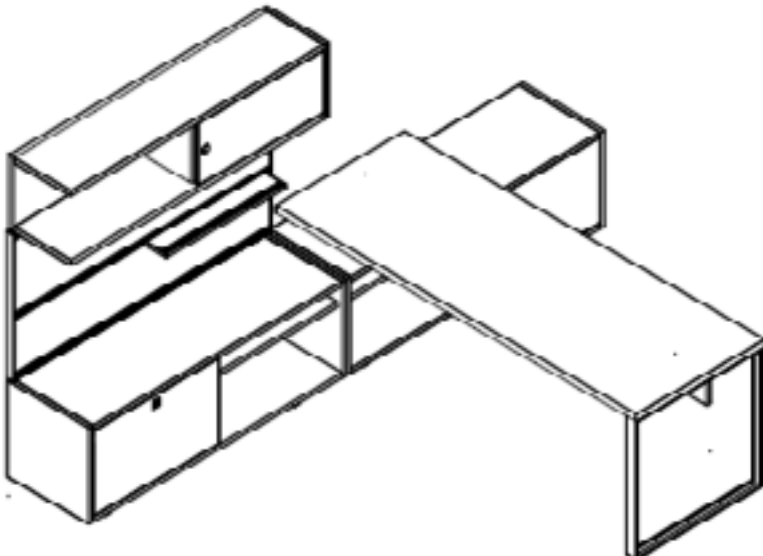
LC# WW3-616

Reff Profiles Layout #5L

★★★★★ \$3500-6500

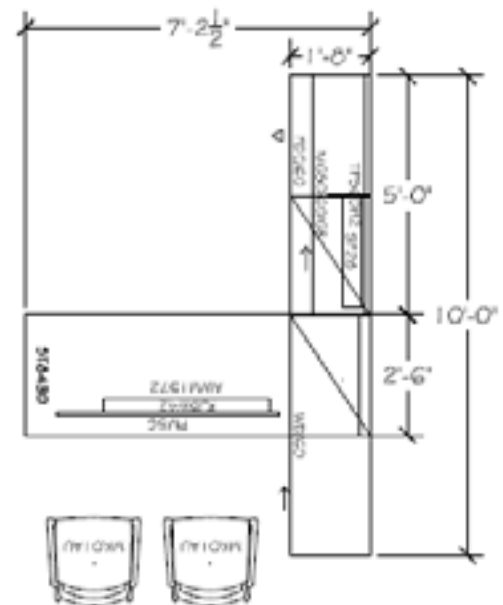
5 weeks + shipping lead time

Limited Lifetime Warranty



Features

- Laminate surfaces, storage, and overhead
- 84" wide x 34" deep peninsula surface with partial height modesty panel
- 2- 60" wide x 20" deep x 24" high credenzas
 - 1) Box/file storage
 - 2) Open shelving/bookcase
- 60" wide tack board with integrated tool rail for accessories
- 60" wide sliding door overhead with glass sliding door



Can be seen on Campus at:

Work Station - Currency

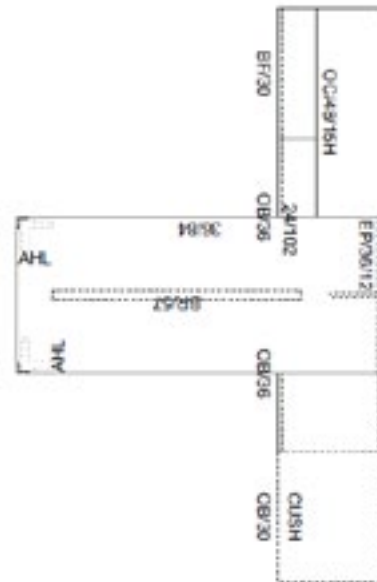
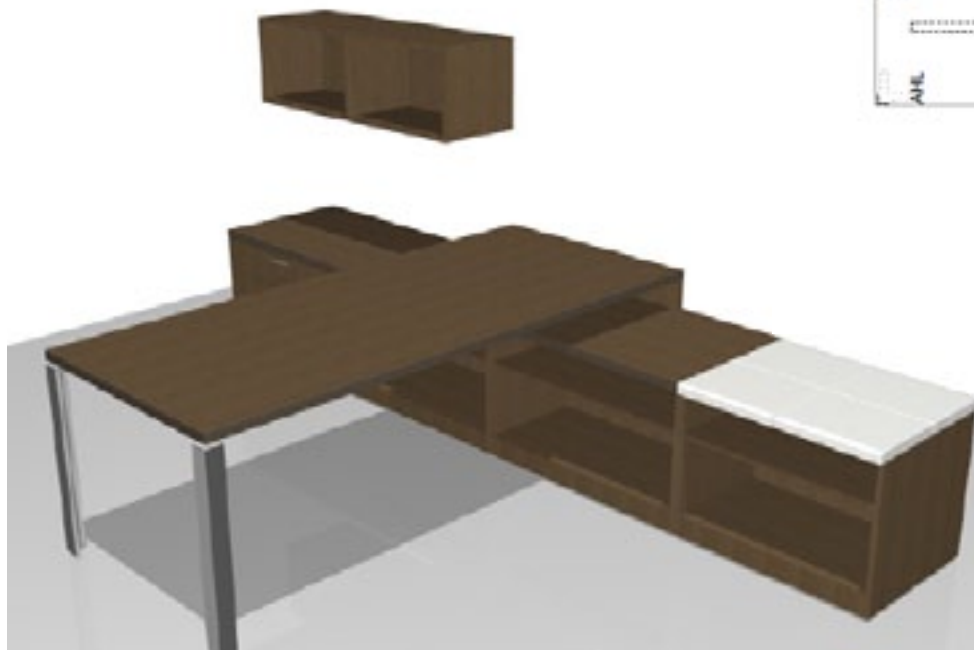
LC# WW3-617

Steelcase EE6 Layout #1

★★★★★ \$3500-6500

4-6 week lead time

Limited Lifetime Warranty



Features

- Contemporary laminate
- Solid construction
- Fully assembled
- Limited lifetime warranty
- 30 x 60 desk
- 24 x 84 return
- 16 x 72 credenza
- 16 x 72 wall mounted cabinet
- Mobile box/file storage

Options

- Many finish options

Can be seen on Campus at:

Work Station - Knoll

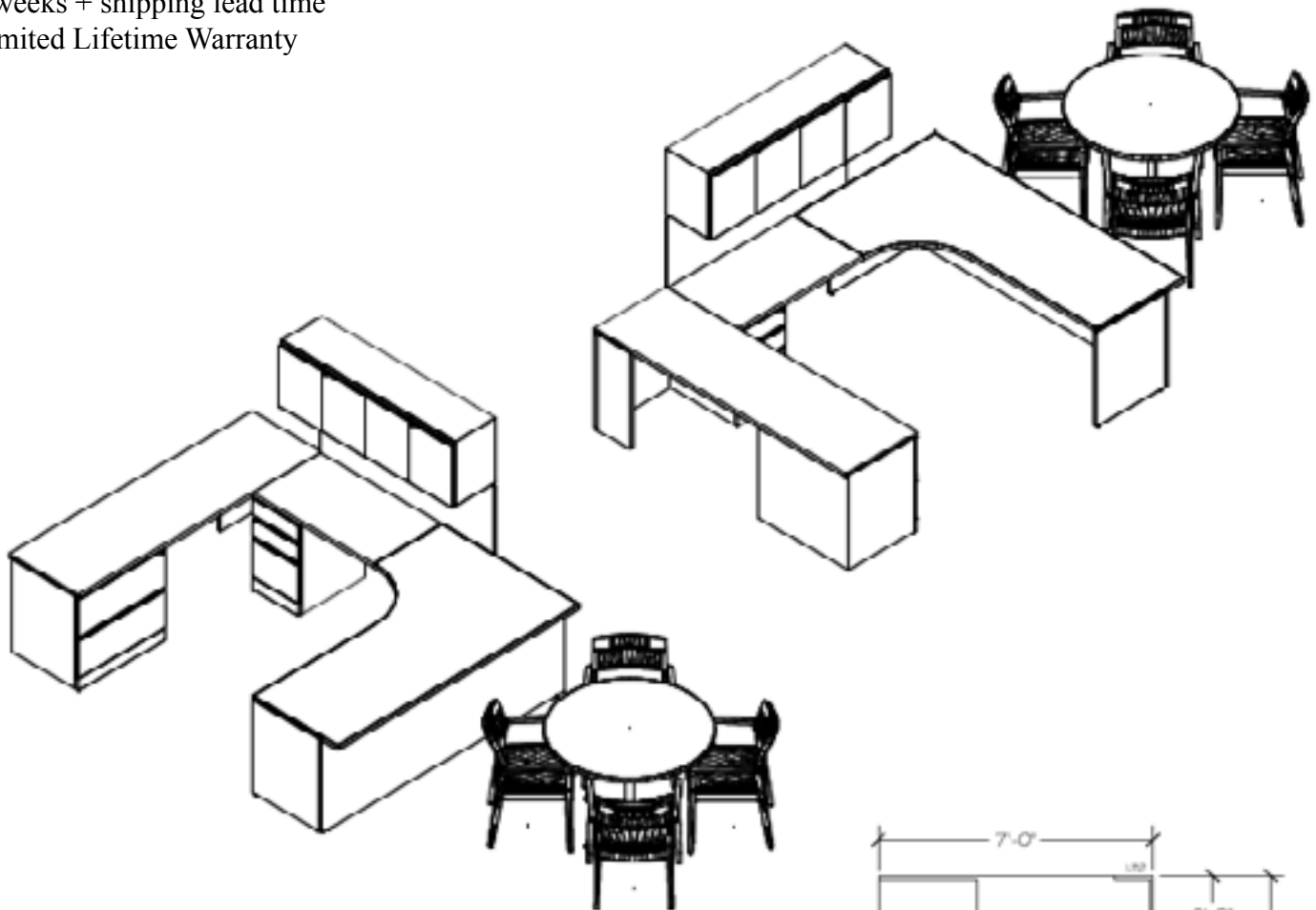
LC# WW3-618

Reff Profiles Layout #4L

★★★★★ \$3500-6500

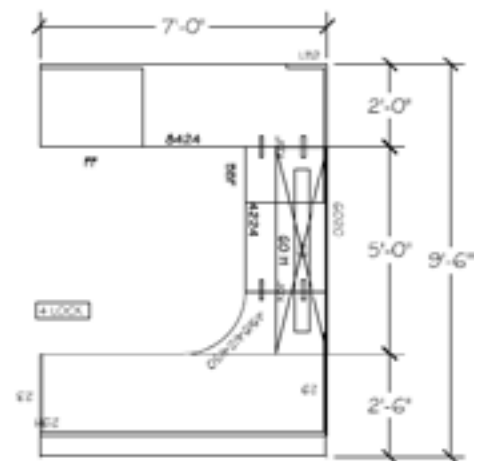
5 weeks + shipping lead time

Limited Lifetime Warranty



Features

- Laminate surfaces, storage, and overhead
- 84" wide x 30/24" deep surface
- 42" wide x 24" deep return surface
- 84" wide 24" deep credenza surface
- 60" wide overhead with hinged doors, exposed cubby, and task light
- Box/file pedestal
- 30" wide 2 drawer lateral file
- 60" wide tack board
- Side chairs & round table are not included



Can be seen on Campus at:

Work Station - Herman Miller

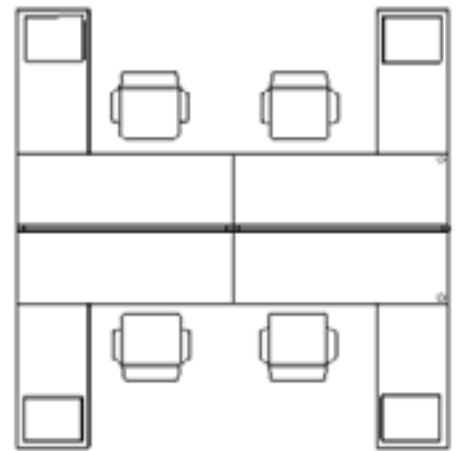
LC# WW3-619

Sense Desking (4 Pack)

★★★★★ \$3500-6500

5 week lead time

12 Year Warranty



Features

- Set of 4
- 24" x 72" main desks
- 24" x 48" returns
- Laminate surfaces
- Privacy panel
- Fixed height angled legs (metallic silver)

Options

- Available with straight or adjustable legs

Can be seen on Campus at:

Work Station - Knoll

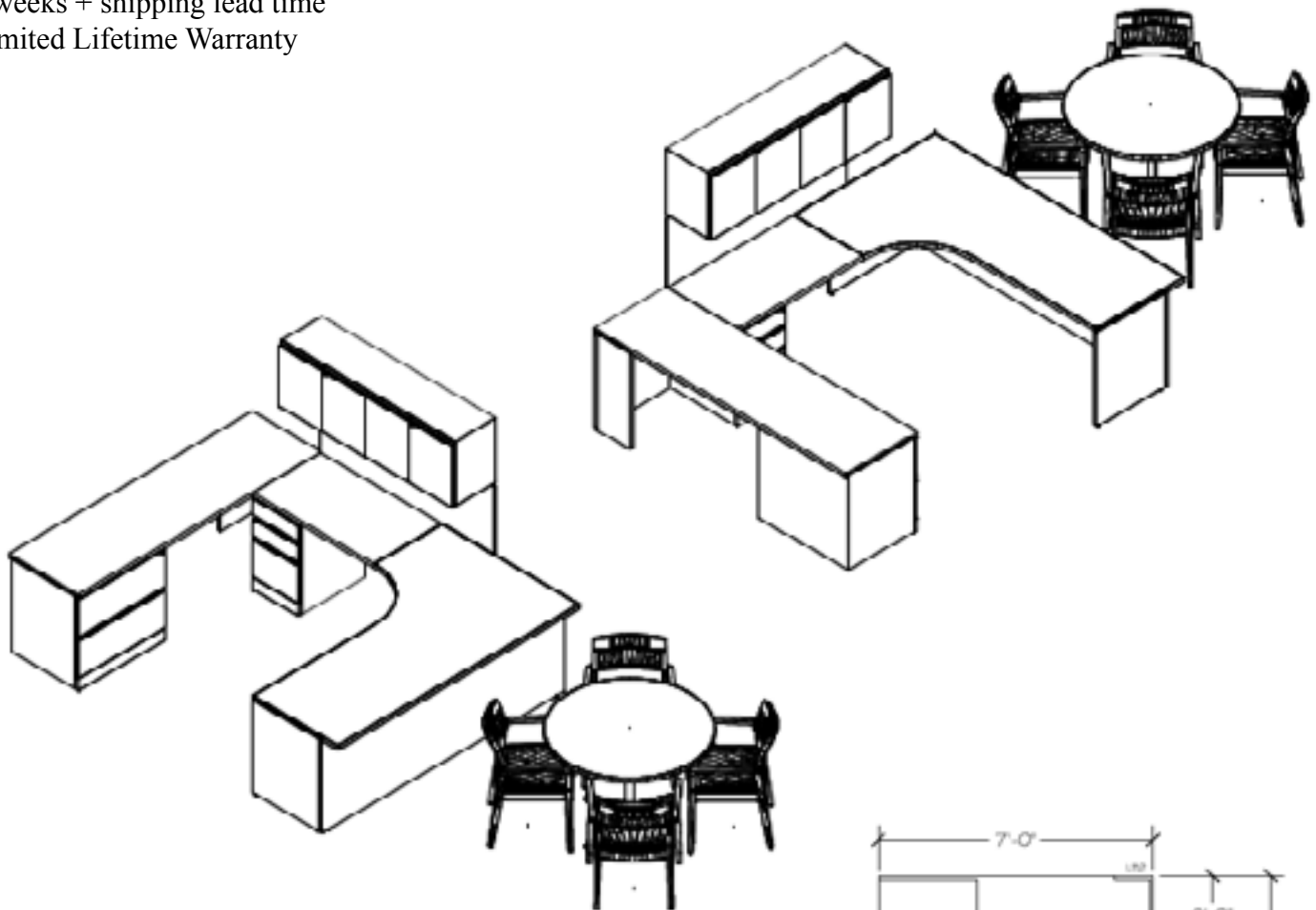
LC# WW3-620

Reff Profiles Layout #4V

★★★★★ \$3500-6500

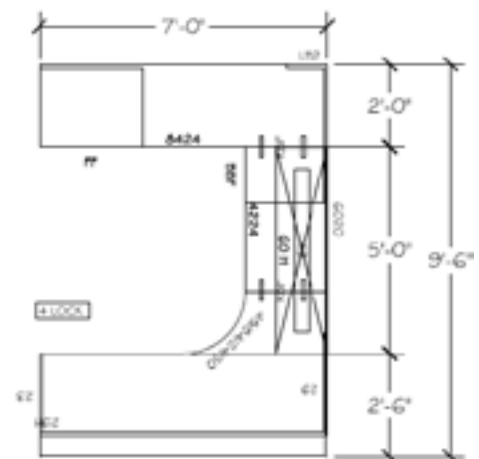
5 weeks + shipping lead time

Limited Lifetime Warranty



Features

- Veneer surfaces, storage, and overhead
- 84" wide x 30/24" deep surface
- 42" wide x 24" deep return surface
- 84" wide 24" deep credenza surface
- 60" wide overhead with hinged doors, exposed cubby, and task light
- Box/file pedestal
- 30" wide 2 drawer lateral file
- 60" wide tack board
- Side chairs & round table are not included



Can be seen on Campus at:

Work Station - Knoll

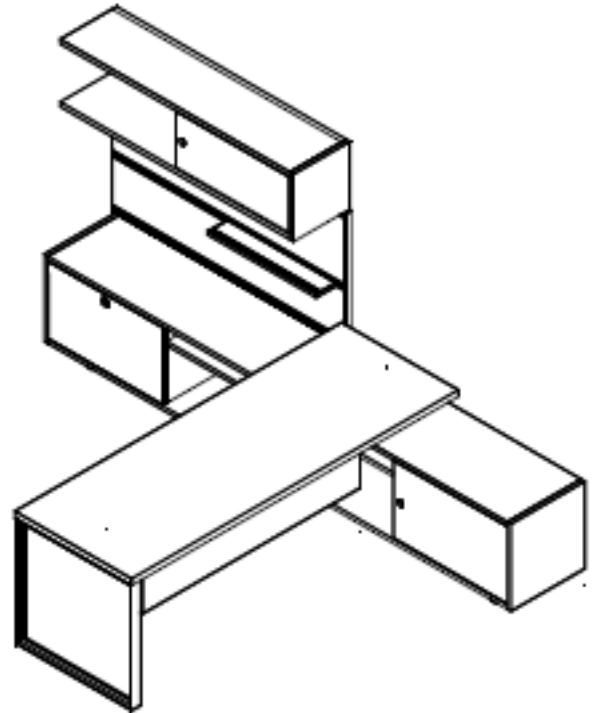
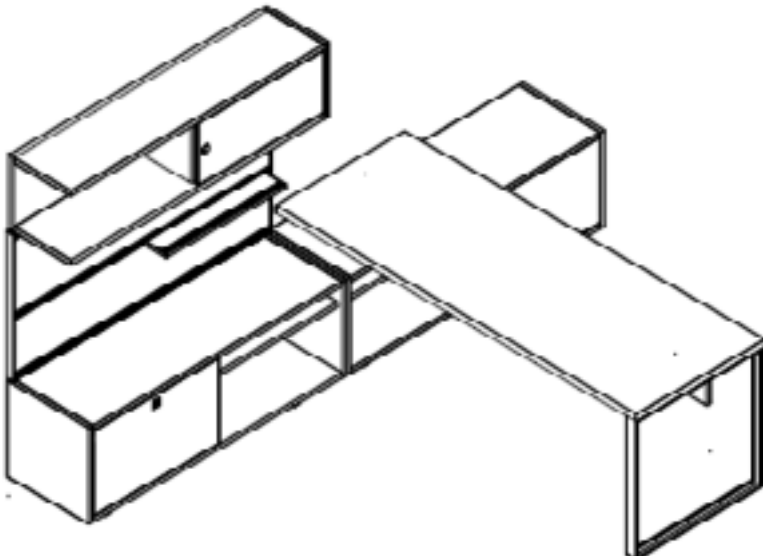
LC# WW3-621

Reff Profiles Layout #5V

★★★★★ \$3500-6500

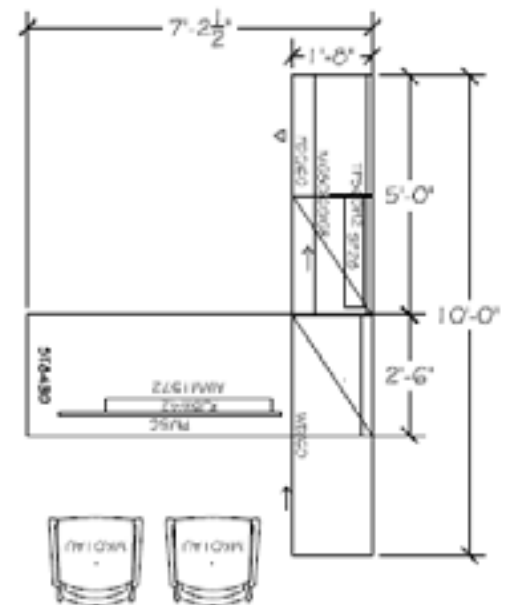
5 weeks + shipping lead time

Limited Lifetime Warranty



Features

- Veneer surfaces, storage, and overhead
- 84" wide x 34" deep peninsula surface with partial height modesty panel
- 2- 60" wide x 20" deep x 24" high credenzas
 - 1) Box/file storage
 - 2) Open shelving/bookcase
- 60" wide tack board with integrated tool rail for accessories
- 60" wide sliding door overhead with glass sliding door



Can be seen on Campus at:

Work Station - Currency

LC# WW3-622

Steelcase EE6 Layout #2

★★★★★ \$3500-6500

4-6 week lead time

Limited Lifetime Warranty



Features

- Fully assembled
- Limited lifetime warranty
- 36" round table w/ metal base
- Slanted open front desk
- 36" box/file lateral file
- Cushion top on file
- Wall mounted open cabinets
- Floating desk top design

Options

- Wood or laminate available
- Many finish options
- Technology pieces available

Can be seen on Campus at:

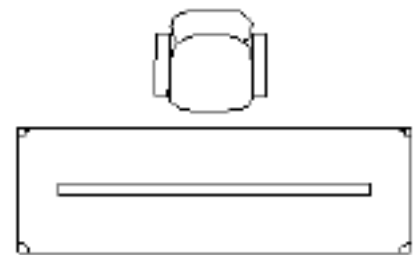
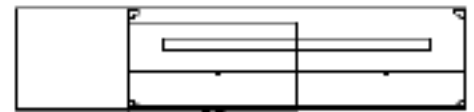
Work Station - Herman Miller, Canvas Office Landscapes

Executive Office Layout #3

★★★★★ \$3500-6500

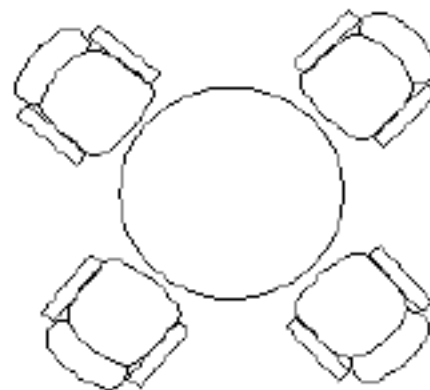
5 week lead time

12 Year Warranty



Features

- 30" x 72" main desk
- 24" x 72" back desk
- 64"h x 24" x 24" wardrobe unit
- Upper storage cabinets
- Lower lateral file
- Veneer surfaces and storage
- Fixed height post legs
- 42" diameter round table



Can be seen on Campus at:

Work Station - Herman Miller

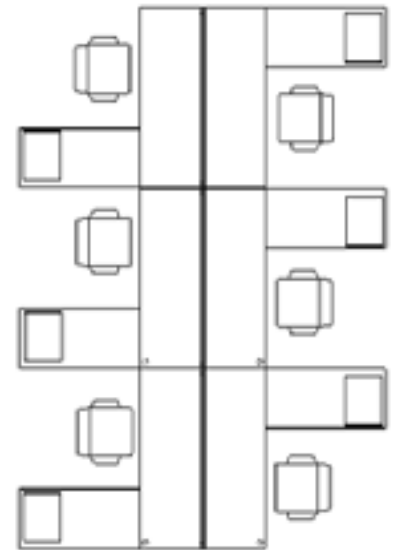
LC# WW3-624

Sense Desking (6 Pack)

★★★★★ \$3500-6500

5 week lead time

12 Year Warranty



Features

- Set of 6
- 24" x 72" main desks
- 24" x 48" returns
- Laminate surfaces
- Privacy panel
- Fixed height angled legs (metallic silver)

Options

- Available with straight or adjustable legs

Can be seen on Campus at: