

Loading Print Driver from Mac (1 bill code)

Click on the apple at the top left hand side of the screen.

Select Verify Version. (Ex: 10.9)



Open up Safari. Go to the following website:

<http://onyxweb.mykonicaminolta.com/OneStopProductSupport>

Type 'C654e' into the Quick Search area.

Select the driver that matches your operating system.

Self-Help Product Support

Type in a unique part of a product name and select from the list.

Quick Search:
bizhub C654e →
or Select a Category: [dropdown]

Popular Links

- General Videos
- OS X 10.10 Driver Schedule
- Knowledge Base
- Meter Serial Locator
- Users Guides

Type (Optional)

- Drivers (625)
- Drivers-PSES/AUM (28)
- Drivers-Universal Printer (244)
- MSDS (9)
- SAP Device Type (7)
- Utilities (26)

OS (Optional)

- Intel Mac OS 10.4.x (4)
- Intel Mac OS 10.5.x (4)
- Linux (1)
- Mac OS 10.10.x (3)
- Mac OS 10.2.x (3)
- Mac OS 10.3.x (3)
- Mac OS 10.4x (3)
- Mac OS 10.5.x (4)
- Mac OS 10.6.x (4)
- Mac OS 10.7.x (4)
- Mac OS 10.8.x (4)
- Mac OS 10.9.x (9)
- Windows 2000/XP (23)
- Windows 2003 (28)
- Windows 2003 64-Bit (28)
- Windows 2008 (32)
- Windows 2008 64-Bit (32)
- Windows 2008_R2 (32)
- Windows 2012 (28)
- Windows 2012_R2 (20)

Search

Select the link for the first version of the print driver to download unless it contains the working 'A4'. **If the first option for the print driver contains the wording 'A4' then select the second option for the print driver.**

Drivers (9)

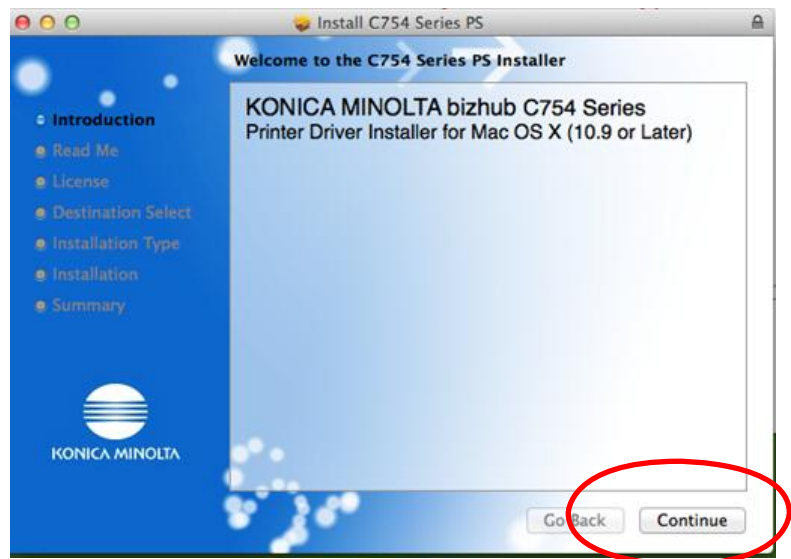
Mac OS 10.9.x (9)

Postscript (8) Postscript PPD (1)

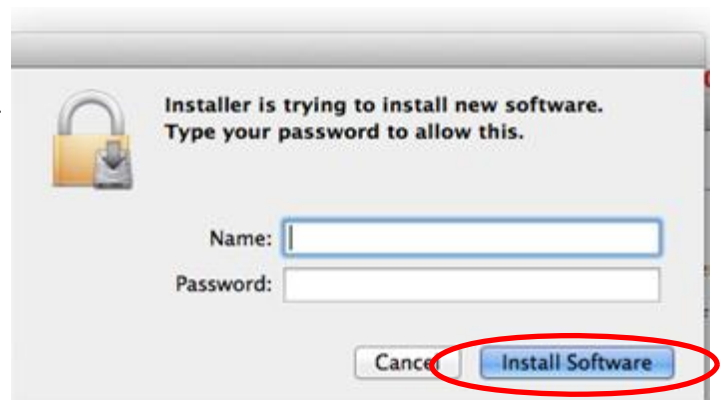
Version 5.2.0	10/17/2014-10/20/2014
10/20/2014 8.8 MB C754 Series v5.2.0 A4.zip Release Notes: bizhub C654, C754, C654e, C754e Mac 10.9, 10.10 Driver Default paper size: A4 SEE DLBT1415869EN00.pdf Supported Languages: English, Español, Chinese Simplified, Chinese Traditional, Français, German, Italian, Japanese, Korean	
10/20/2014 8.8 MB C754 Series v5.2.0 Letter.zip Release Notes: bizhub C654, C754, C654e, C754e Mac 10.9, 10.10 Driver Default paper size: Letter SEE DLBT1415869EN00.pdf Supported Languages: English, Español, Chinese Simplified, Chinese Traditional, Français, German, Italian, Japanese, Korean	
10/17/2014 30 KB DLBT1415869EN00.pdf Release Notes: bizhub C654, C754, C654e, C754e Mac 10.9, 10.10 Driver README file Supported Languages: English, Español, Chinese Simplified, Chinese Traditional, Français, German, Italian, Japanese, Korean	

Selecting the link for the print driver will automatically begin the download of the driver.

A box will pop up- just select continue
and agree until the box completes.



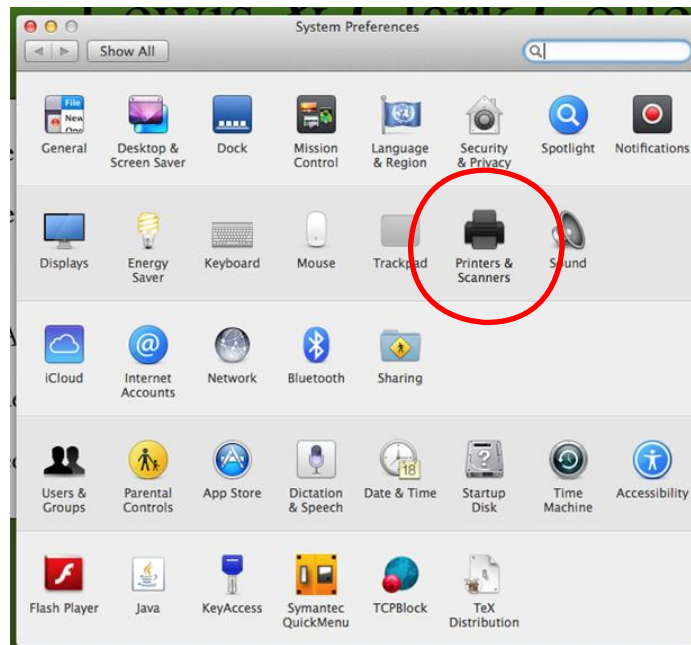
Enter in your login name and password and
select Install Software to close out the window.



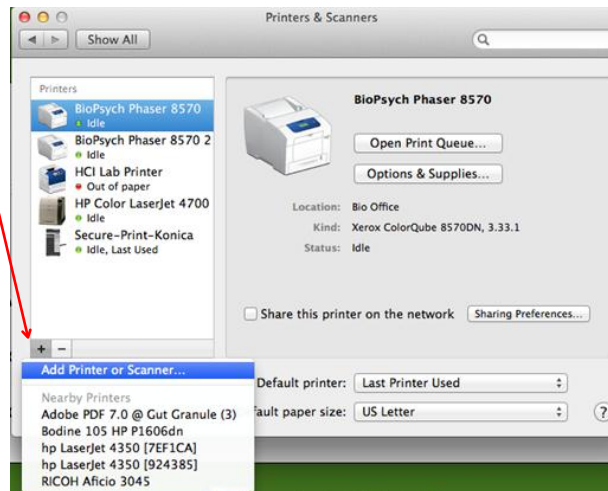
Select the Apple from the top left hand side
of the screen and select System Preferences.



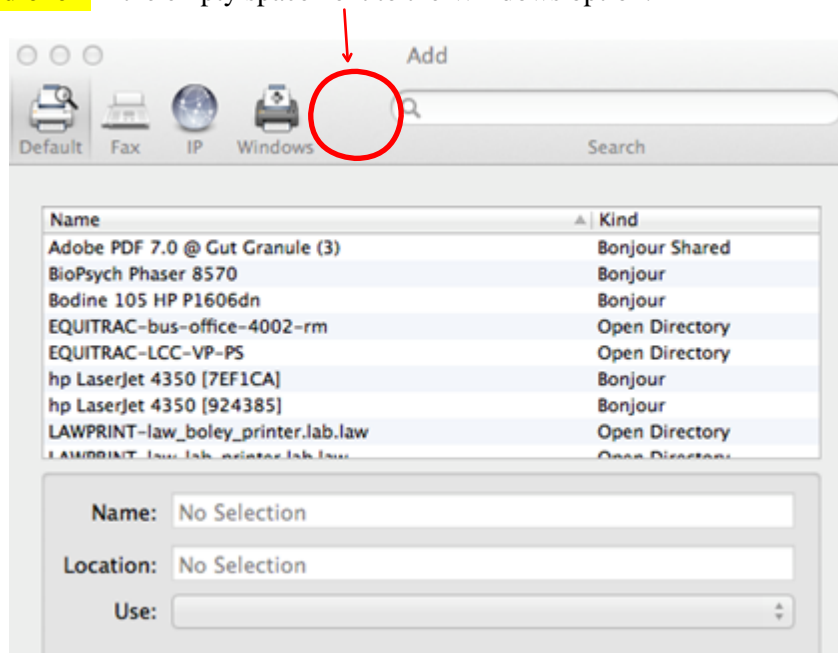
Select Printers and Scanners.



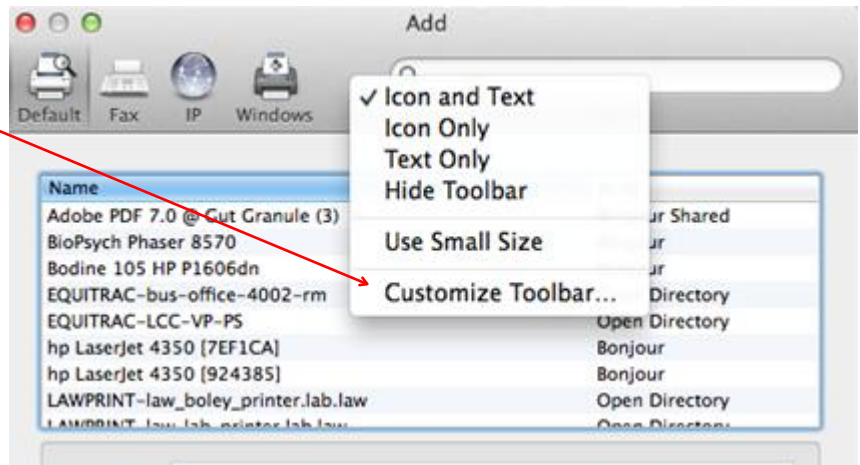
Select the Plus sign in the bottom left.



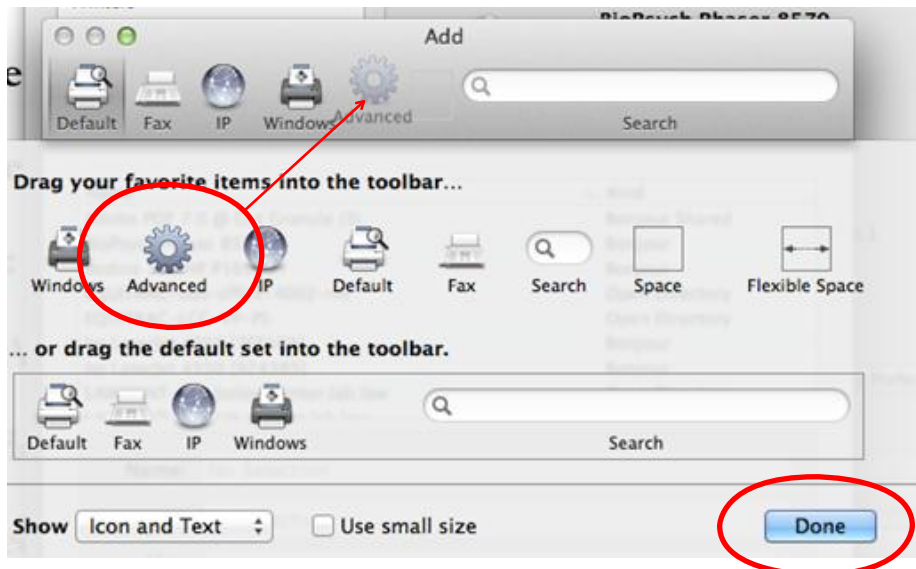
Press **control and click** in the empty space next to the Windows option.



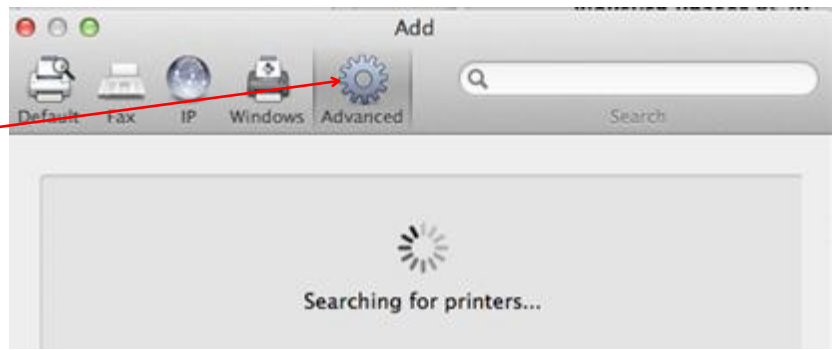
Select Customize Tool Bar.



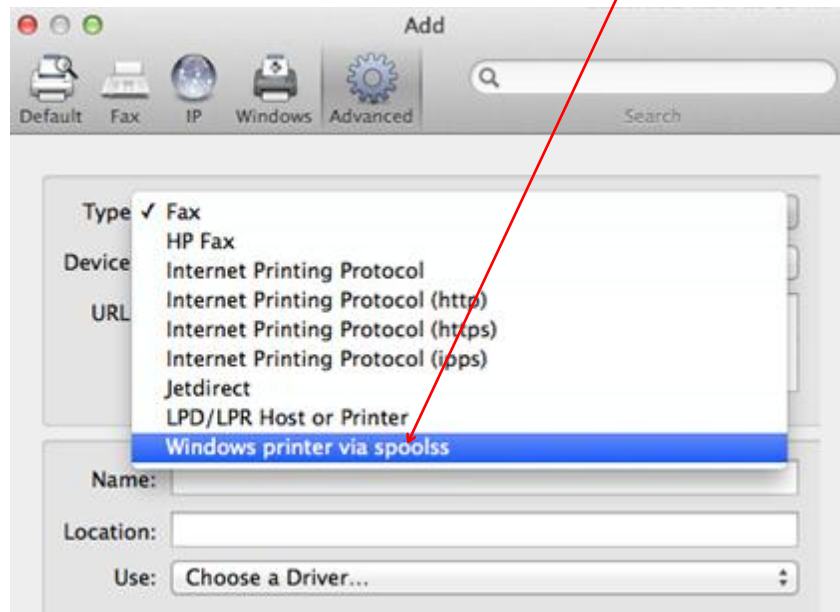
Drag the Advanced icon up next to the Windows icon, then select Done.



Select the Advanced icon.



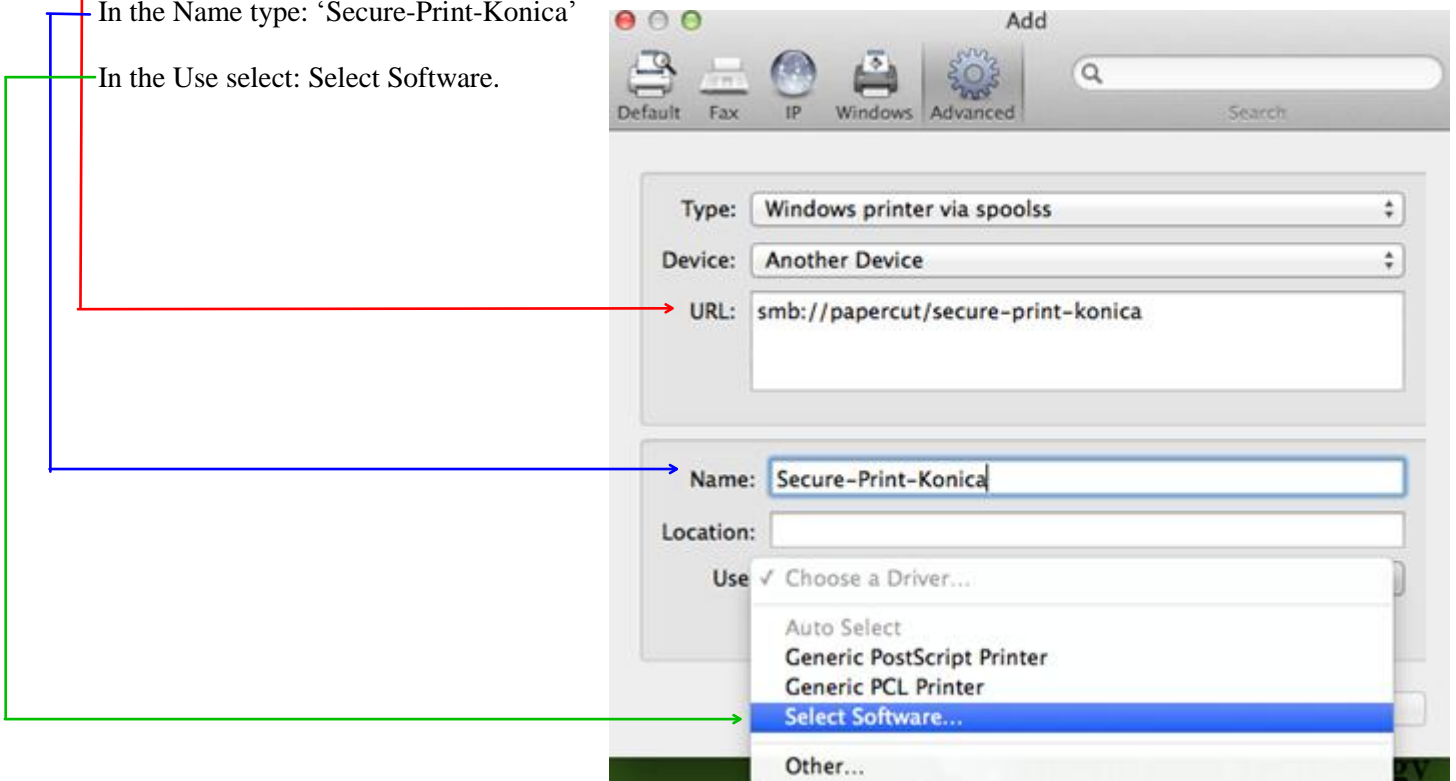
Select the pull down for Type and select 'Windows Printer via Spoolss'.



In the URL type: 'smb://papercut/secure-print-konica'

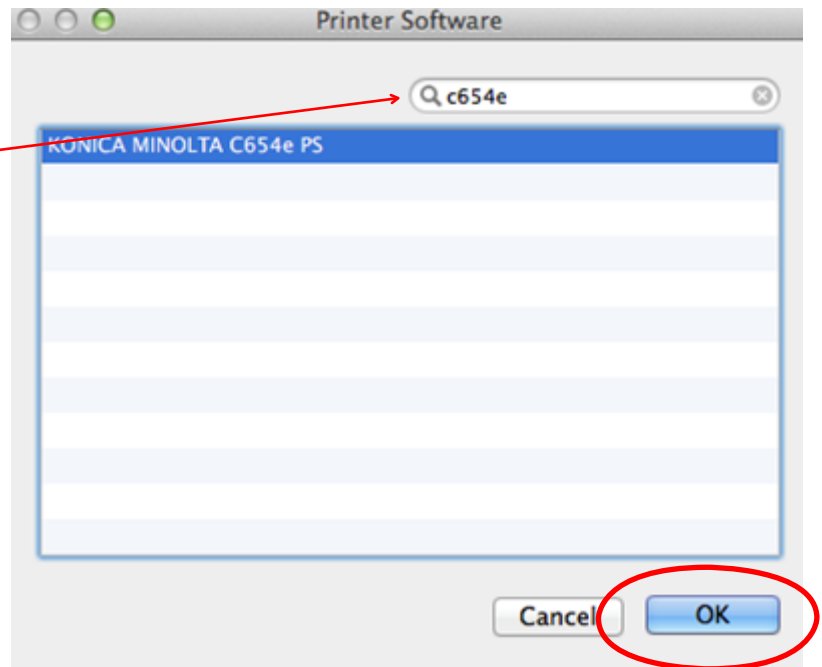
In the Name type: 'Secure-Print-Konica'

In the Use select: Select Software.

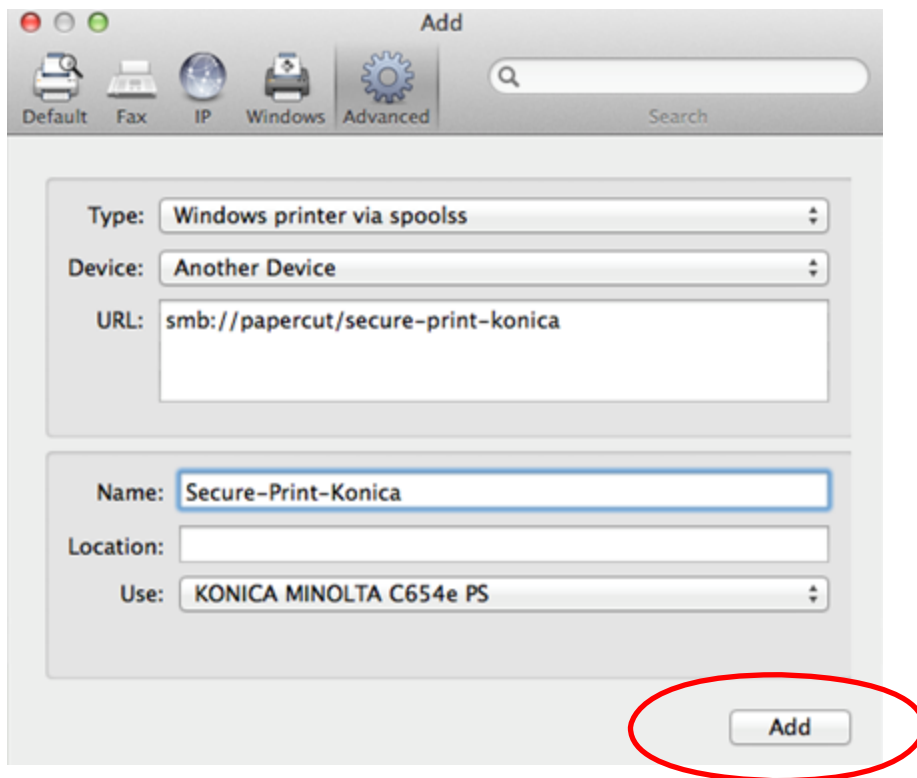


In Filter select 'C654e'. Select Result.

Hit OK.



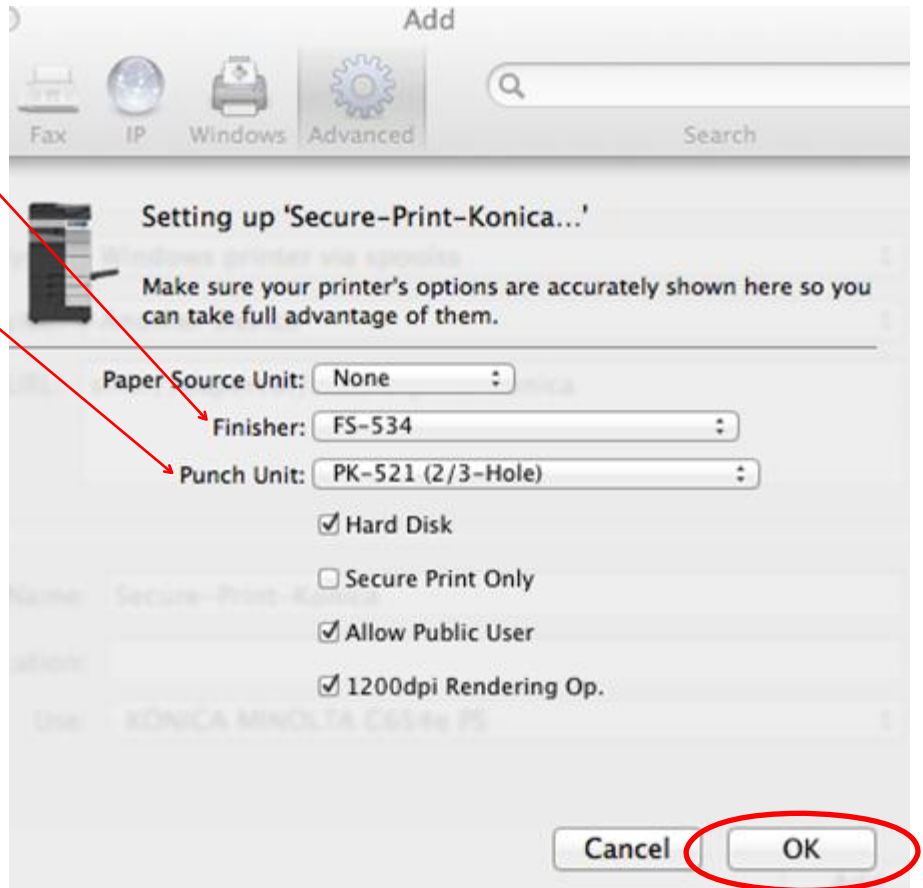
Then select Add.



In Finisher: Select the finishing option (ex: FS-534, FS-533).

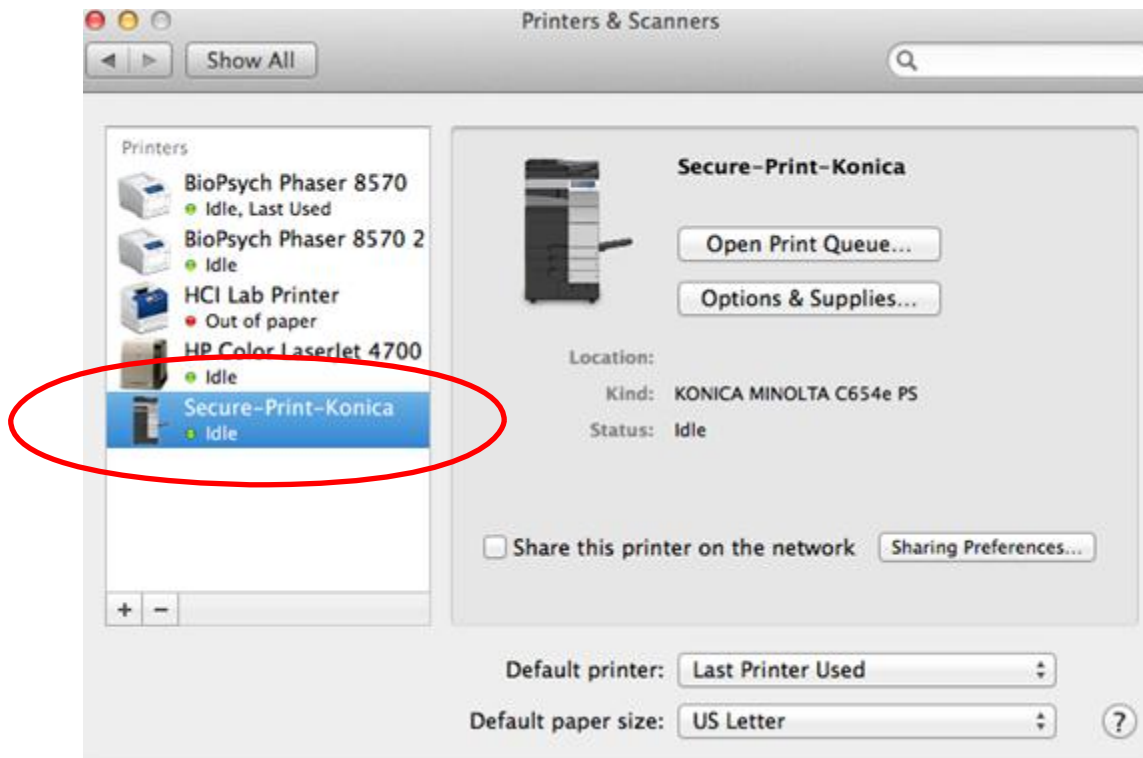
In Punch: Select punch option (ex: PK-521 (2-3 Hole)).

Hit OK.

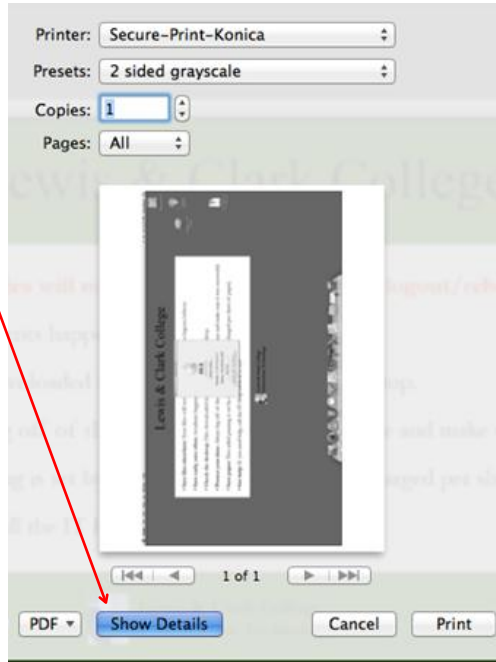


Open up a document for print. (This can be any document; we are now only setting up the defaults one time).

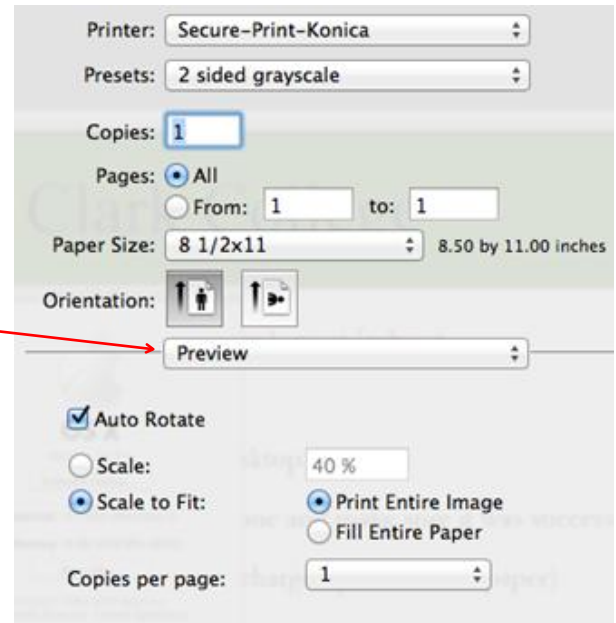
Select Printer: Secure-Print-Konica



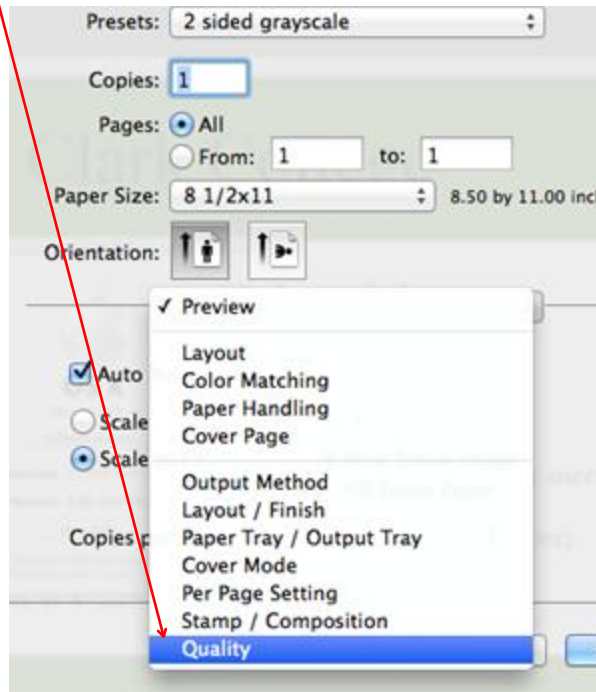
Select Show Details.



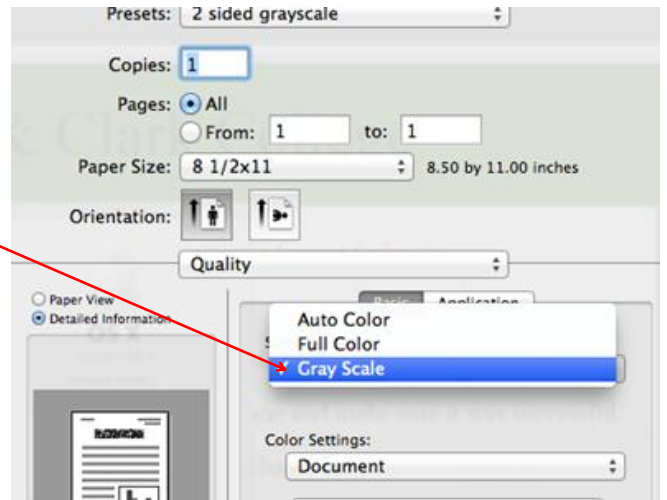
Select Preview.



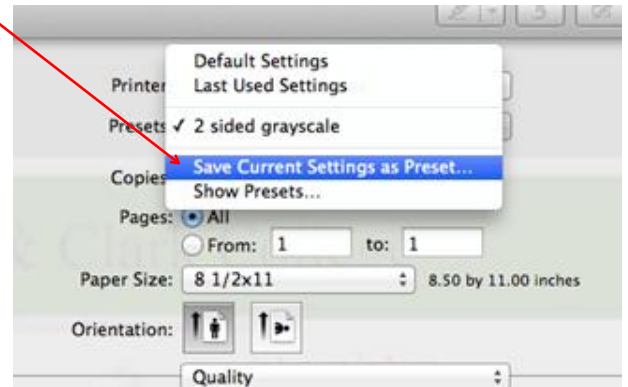
Select Quality.



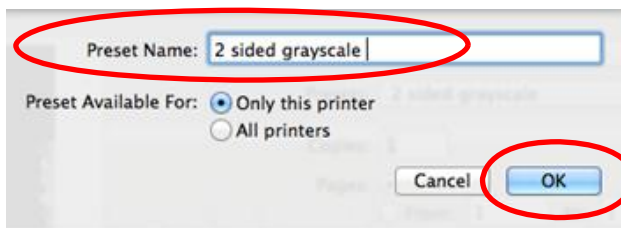
Under Color, select Grey Scale.



Under Preset, select Save Current Settings as Pre-Set.



For Preset Name type: '2 Sided Grey Scale'. Hit OK.



Hit Print.

