



Service Desk

Get help with your IT questions and needs. Stop by the Service Desk in Watzek Library by following the blue dots or contact us via email or phone.

[\(503\)768-7225](tel:5037687225)

itservice@lclark.edu



Loaner Equipment

Borrow chargers, laptops, cameras, microphones and more at the IT Service Desk in Watzek Library for 2 weeks. Stop by the service desk or visit the website to view a catalog of available equipment.

lclark.siso.co



PioNet Wireless

Connect to Wi-Fi using your LC username (ex: LC22-1234) and password. Learn more below and report internet issues to the Service Desk.

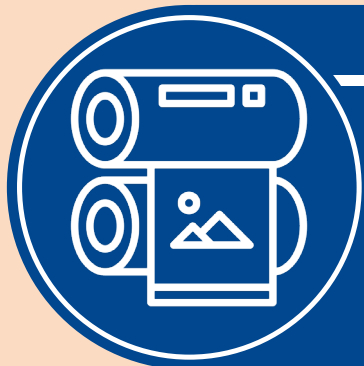
go.lclark.edu/PioNet



IT Website

Visit the Lewis & Clark IT website to find links and important information on IT resources and services.

go.lclark.edu/IT



R Lab

The R Lab is located next to the Service Desk in Watzek and is available 24/7 via card access. They offer access to Adobe Creative Cloud, Wacom tablets, and more. Specialty printing (Poster, 3D, sticker) is also available by request.

go.lclark.edu/RLab

IT RESOURCES



Download
Me

Computer Labs

Utilize the computer labs to access academic software and tools. Review additional information on labs and available software are the page below.

go.lclark.edu/ComputerLabs



Moodle

Moodle is the Learning Management System used at Lewis & Clark. Learn more about Moodle and access Moodle at the links below.

go.lclark.edu/Moodle



Microsoft Office 365

As students, you receive free access to Office 365 through Microsoft while enrolled. Learn how to sign up to get a free license at the link below.

go.lclark.edu/Office365



Antivirus

Lewis & Clark IT provides students access to enterprise antivirus. We recommend antivirus for all Mac and PC users.

go.lclark.edu/Antivirus



Printing

Printing is available at the Watzek Library lab and at print stations in Fowler.

